

AMOSCA SUPPORT CENTRE

IMPORTANT BULLETIN – ACTION REQUIRED

Microsoft Security Update affecting Hyperion EPM

Background

In August 2019 Microsoft published Security Advisory ADV190023 advising that a new set of safe default configurations for LDAP channel binding and LDAP signing on Active Directory Domain Controllers will be introduced by Windows Updates during March 2020.

In essence, the current LDAP protocol is unsafe and will be replaced by a new LDAPS protocol.

As a third-party application, Hyperion EPM implementations will be affected if Microsoft Active Directory is used for Hyperion user authentication.

This bulletin outlines the steps that will need to be taken before the application of Windows Updates in March 2020 to prevent your Hyperion EPM implementation being rendered inoperable. The changes will need to be made on each Hyperion environment.

What you need to do

Engage with your IT service provider and follow the steps outlined below. It is likely that they will already know about the Advisory - but they may not recognise that Hyperion EPM will be affected.

In summary:

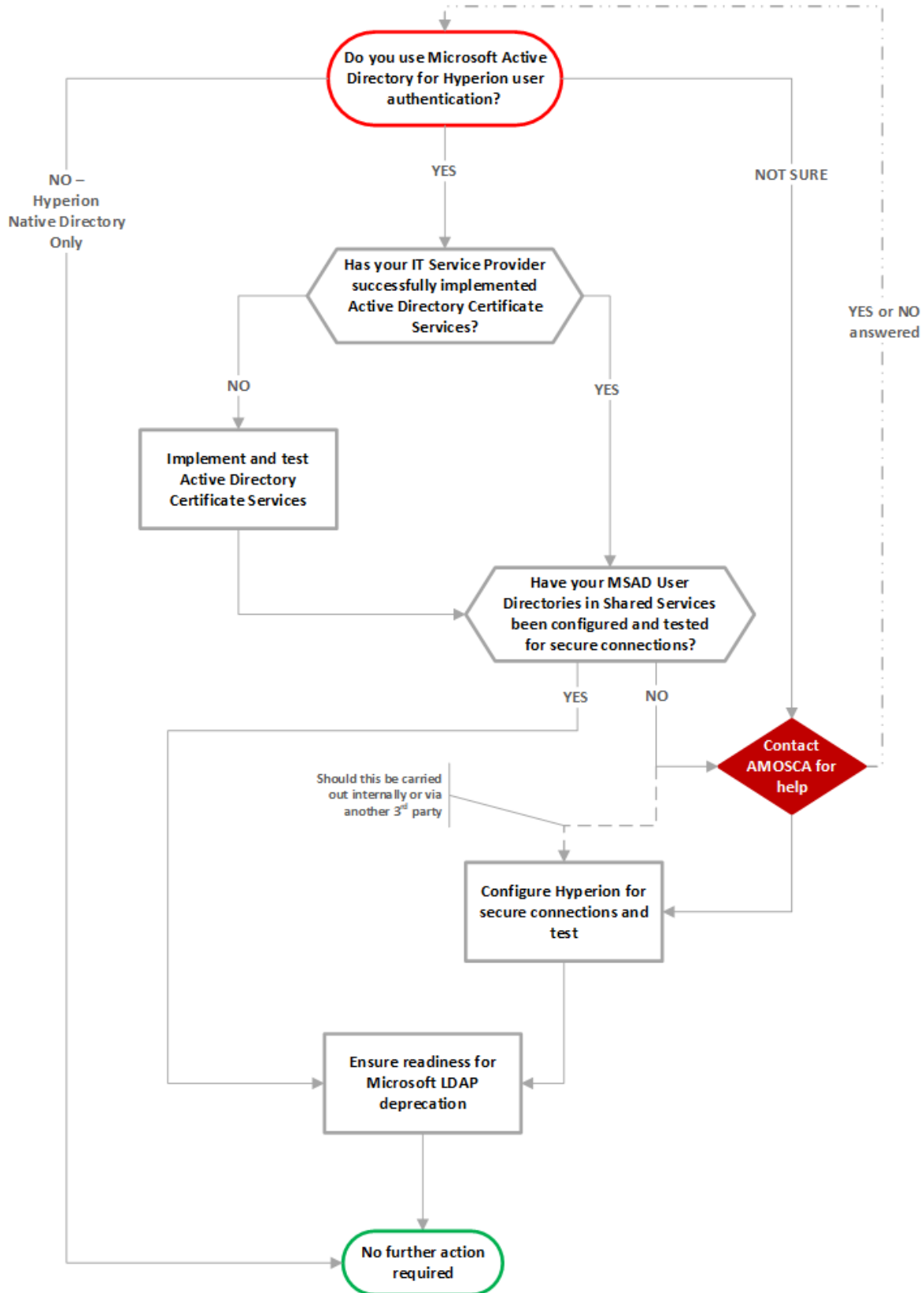
- Complete the 'Finance & IT Assessment' below
- If any answers are 'No' or 'Not Sure', contact AMOSCA for assistance
- Ensure your IT service provider implements ADCS (Active Directory Certificate Services) and tests the Windows client authentication
- Apply 3rd party application configuration and testing where authenticating to MSAD (Microsoft Active Directory)

Contacting AMOSCA for assistance

AMOSCA can offer advice and assistance to you and your IT contacts on the next steps.

The **AMOSCA Support Centre** can be contacted via +44 20 8659 5777 or helpdesk@amosca.co.uk

Finance & IT Assessment



Related Technical information

Share the information links below with your IT service provider. They should be able to make use of these to address the issue if they have not done so already.

- ✓ Microsoft Advisory:

<https://portal.msrc.microsoft.com/en-us/security-guidance/advisory/ADV190023>

- ✓ 2020 LDAP channel binding and LDAP signing requirement for Windows:

<https://support.microsoft.com/en-us/help/4520412/2020-ldap-channel-binding-and-ldap-signing-requirement-for-windows>

- ✓ Use the LdapEnforceChannelBinding registry entry to make LDAP authentication over SSL/TLS more secure:

<https://support.microsoft.com/en-us/help/4034879>

- ✓ How to enable LDAP signing in Windows Server 2008 (and newer releases):

<https://support.microsoft.com/en-us/help/935834>

! Note: If AD is hosted on Windows 2016 servers or above, you will be required to also update the Java components in the EPM environments.