

# Hyperion Focus 17

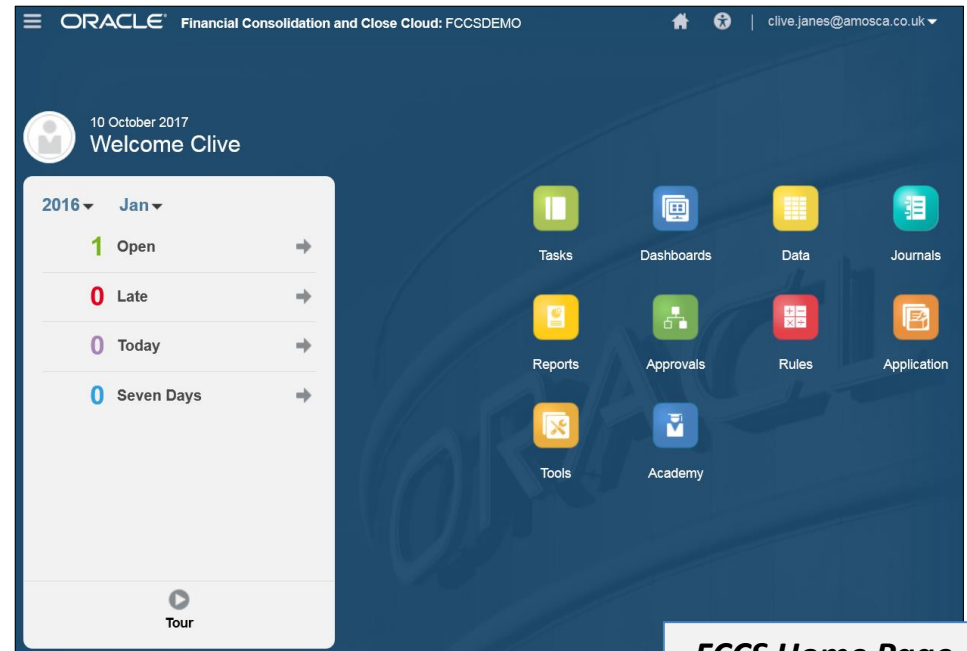
## FCCS: Are You Ready?

Clive Janes  
Principal Consultant  
AMOSCA



# Agenda

- What is FCCS
- What do you get with FCCS
- FCCS Demo
- Comparing FCCS to HFM
- Q & A



*FCCS Home Page*



# What is FCCS

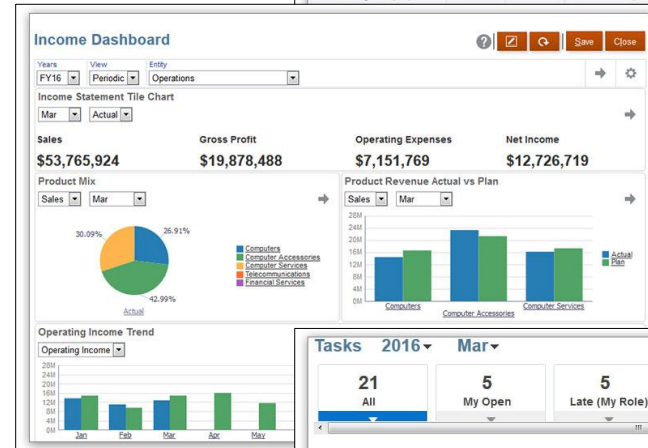
- Financial Consolidation and Close Cloud Service
  - » Cloud based solution for running financial consolidations and reporting
    - Important to note: FCCS is NOT HFM in the cloud
    - This is a new product re-architected with Essbase backend and new UI
  - » Out-of-the-Box provides a framework model for best practice consolidation
    - For Management and Statutory reporting
    - Pre-configured dimensions and Pre-seeded hierarchies
    - Ability to expand on the pre-built framework to meet individual business requirements
  - » Provides an End-to-End solution
    - Data Collection and Integration
      - » Supplemental Data Manager
      - » Data Management
    - Consolidation
    - Close Process Management
    - Reporting
- No requirement to manage infrastructure, software maintenance / patching
  - » Software updates are automatic from Oracle
  - » The customer will always have the latest version



# What do you get with FCCS

- Financial Consolidation
  - » Configuration - guided wizard for application creation
  - » Pre-configured dimensions and Pre-seeded hierarchies to accelerate deployment
  - » Limited customisation - metadata expansion and member calculations
  - » Out-of-the-Box features:
    - Currency translation
    - Intercompany eliminations
    - Calculations for e.g. CTA and ratios
    - Automated Cash Flow (requires metadata expansion to the Account and Movement dimensions)
    - Pre-built data forms, reports and dashboards
  - » Test and Production environments
- Data Management (FDMEE 'Lite')
  - » For loading data from source systems
    - Integration with other cloud services e.g. NetSuite, PBCS
    - File based for non cloud systems
- Supplemental Data Manager
  - » Collect lower level detail e.g.
    - Maturity dates for investments
    - Supplemental disclosure notes for legal reporting
  - » Ability to validate totals against FCCS balances
- Close Manager
  - » Provides a way to manage workflow and close tasks (different model to HFM)
  - » Enforces segregation of duties through e.g. submission and approval of journals

| Years | Scenario | Actual | Currency | Entity | Currency | Jan                            | Feb         | Mar         | Apr         | May         | Jun         | Jul         | Aug         |
|-------|----------|--------|----------|--------|----------|--------------------------------|-------------|-------------|-------------|-------------|-------------|-------------|-------------|
|       |          |        |          |        |          | Calc Status                    | Calc Status | Calc Status | Calc Status | Calc Status | Calc Status | Calc Status | Calc Status |
|       |          |        |          |        |          | Operations(USD)                | OK          | OK          | OK          | Impacted    | No Data     | No Data     | No Data     |
|       |          |        |          |        |          | Distributions(USD)             | OK          | OK          | OK          | Impacted    | No Data     | No Data     | No Data     |
|       |          |        |          |        |          | Project Mfg (Viseen MISC)(USD) | OK          | OK          | OK          | Impacted    | No Data     | No Data     | No Data     |
|       |          |        |          |        |          | Education LSB(USD)             | OK          | OK          | OK          | Impacted    | No Data     | No Data     | No Data     |
|       |          |        |          |        |          | Viseen Consulting Limited(USD) | OK          | OK          | OK          | Impacted    | No Data     | No Data     | No Data     |



Tasks 2016 | Mar

21 All | 5 My Open | 1 Late (My Role) | 1 Today (My Role) | 2 7 Days (My Role)

| Type                    | Name | Status          | My End Date          |
|-------------------------|------|-----------------|----------------------|
| Debt Form               |      | With Integrator | May 3, 2016 12:00 AM |
| Debt Form               |      | With Assignee   | May 3, 2016 12:00 AM |
| Investment form         |      | Closed          | May 4, 2016 12:00 AM |
| Investment form         |      | Closed          | May 4, 2016 12:00 AM |
| Update Close Procedures |      | With Approver   | Aug 29, 2016 5:00 PM |
| Update metadata         |      | With Approver   | Aug 30, 2016 6:00 PM |



# What do you get with FCCS

## FCCS Dimensions

|                               | Dimension     | Description  | Configuration Options   |
|-------------------------------|---------------|--|---|
| Pre-defined System Dimensions | Scenario      | Actual   | Additional Scenarios can be added   |
|                               | Year          | 2016 through to 2040   | The span of years for the application                                       |
|                               | Period        | Month (Jan - Dec), Quarters, Half Years                      | 12 or 13 period financial year can be selected with Quarters and Half Years |
|                               | View          | Year-to-Date or Periodic                                     | Periodic, YTD, QTD and HYTD   |
|                               | Entity        | Consolidation reporting hierarchies                          | Can have additional alternate hierarchies                                   |
|                               | Consolidation | Elimination, Proportion and Consolidation                    |   |
|                               | Currency      | Currency   |   |
|                               | Account       | Chart of Accounts  |   |
|                               | Intercompany  | List of Entities that take part in Intercompany transactions |   |
|                               | Movement      | Balance Sheet movements and Cash Flow                        | Used to generate the Cash Flow  |
|                               | Data Source   | Track the sources of data                                    | e.g. separate members for GL load and manual input                          |
| Optional                      | Multi-GAAP    | Multiple GAAP reporting                                      | Option to have IFRS adjustment calculated or input                          |
|                               | Custom 1 - 2  | Maximum two Custom dimensions to provide additional analysis | Only one spare Custom dimension if Multi-GAAP is selected                   |



# What do you get with FCCS

## Pre-Seeded Hierarchies

FCCS\_XXX

'Out-of-the-Box' seeded members

| Account   |  | Never Share               |
|---|--|---------------------------|
| ▶ FCCS_System Account                           | System Account   | Label only                |
| ▶ Exchange Rates                                |  | Label only                |
| ▶ Entered Exchange Rates                        |  | Label only                |
| ▶ Exchange Rates System Members                 |  | Label only                |
| ▲ FCCS_Balance Sheet                            | Balance Sheet  | Dynamic Calc              |
| ▲ FCCS_Total Balance Sheet-Traditional Approach | Total Balance Sheet-Traditional Approach               | Dynamic Calc              |
| ▲ FCCS_Total Assets                             | Total Assets   | Dynamic Calc              |
| ▲ FCCS_Current Assets                           | Total Assets   | Total Assets              |
| ▶ FCCS_Cash And Cash Equivalents                | ▲ FCCS_Current Assets                                  | Current Assets            |
| ▶ FCCS_Acct Receivable                          | ▲ FCCS_Cash And Cash Equivalents                       | Cash and Cash Equivalents |
| ▶ FCCS_Inventories                              | BS0010   | Cash at Bank              |
| ▶ FCCS_Long Term Assets                         | BS0020   | Cash in Hand              |
| ▲ FCCS_Total Liabilities and Equity             | BS0030   | Short Term Deposits       |
| ▶ FCCS_Total Liabilities                        | ▶ FCCS_Acct Receivable                                 | Acct Receivable           |
| ▶ FCCS_Total Equity                             | ▶ FCCS_Inventories                                     | Inventories               |
| ▶ FCCS_Common Stock                             | ▶ FCCS_Long Term Assets                                | Long Term Assets          |
| ▶ BS9200  |  |                           |
| ▶ BS9300  | Own Shares   | Never Share               |
| ▶ FCCS_Surplus                                  | Surplus  | Store                     |
| ▶ FCCS_Other Reserves                           | Other Reserves   | Dynamic Calc              |
| ▲ FCCS_Retained Earnings                        | Retained Earnings                                      | Dynamic Calc              |
| ▶ FCCS_Retained Earnings Prior                  | Retained Earnings Prior                                | Store                     |
| ▲ FCCS_Retained Earnings Current                | Retained Earnings Current                              | Dynamic Calc              |
| ▲ FCCS_Net Income                               | Net Income   | Dynamic Calc              |
| ▶ FCCS_Total Pre Tax Income                     | Total Pre Tax Income                                   | Dynamic Calc              |
| ▶ FCCS_Provision for Income Tax                 | Provision for Income Tax                               | Dynamic Calc              |
| ▶ FCCS_REC OBFXCTA                              | Retained Earnings Current – Opening Balance – FX – CTA | Never Share               |

Metadata expanded for business requirements

Income Statement hierarchy located within the Balance Sheet



# What do you get with FCCS

## Automated Cash Flow

Automated Cash Flow is supported within the pre-built Movement dimension

| Name                              | Alias (Default)           | Data Storage |
|-----------------------------------|---------------------------|--------------|
| Movement                          |                           | Never Share  |
| FCCS_Movements                    | Total Movements           | Dynamic Calc |
| FCCS_No Movement                  | No Movement               | Store        |
| FCCS_ClosingBalance               | Closing Balance           | Never Share  |
| FCCS_TotalOpeningBalance          | Total Opening Balance     | Never Share  |
| FCCS_Mvmts_Total                  | Total Movement Changes    | Never Share  |
| FCCS_Mvmts_Subtotal               | Movements Subtotal        | Never Share  |
| FCCS_Mvmts_Cash                   | Changes in Cash           | Never Share  |
| FCCS_Mvmts_Operating              | Movements Operating       | Dynamic Calc |
| FCCS_Mvmts_NetIncome              | Changes in Net Income     | Never Share  |
| FCCS_Mvmts_AdjustmentsToNetIncome | Adjustments to Net Income | Never Share  |
| FCCS_Mvmts_ChangesInNetAssets     | Changes in Net Assets     | Never Share  |
| Mvmts_Interest Paid Recd          | Changes in Interest       | Never Share  |
| Mvmts_Tax Paid Recd               | Changes in Tax            | Never Share  |
| FCCS_Mvmts_Investing              | Movements Investing       | Dynamic Calc |
| FCCS_Mvmts_Financing              | Movements Financing       | Dynamic Calc |
| Mvmts_NonCash_Control             |                           |              |
| FCCS_Mvmts_FX_Total               |                           |              |

An alternate Movement hierarchy is provided for Cash Flow

|   |  |              |
|---|--|--------------|
| FCCS_CashFlow                             | Cash Flow  | Dynamic Calc |
| FCCS_CashFlow_Operating                   | Net Cash from Operations                           | Dynamic Calc |
| FCCS_CashFlow_NetIncome                   | Net Cash from Income                               | Dynamic Calc |
| FCCS_CashFlow_AdjustmentsToNetIncome      | Net Adjustments to Income                          | Dynamic Calc |
| FCCS_CashFlow_DepreciationAndAmortization | Cash Flow Adj - Add Back of Non Cash Items         | Dynamic Calc |
| CashFlow_AdjustmentForInt                 | Cash Flow Adj - Add Back of Interest IS Credit/Chg | Never Share  |
| CashFlow_AdjustmentForCTax                | Cash Flow Adj - Add Back of CTax IS Credit/Chg     | Never Share  |
| FCCS_CashFlow_NetAssets                   | Net Adjustments to Net Assets                      | Dynamic Calc |
| FCCS_CashFlow_Investing                   | Net Cash from Investing                            | Dynamic Calc |
| FCCS_CashFlow_CapitalExpenditures         | Cash Flow from Capital Expenditures                | Dynamic Calc |
| FCCS_CashFlow_ProceedsFromSalesOfPPE      | Cash Flow on Proceeds from Sales of PPE            | Dynamic Calc |
| FCCS_CashFlow_OtherInvestingActivities    | Cash Flow from Other Investing Activities          | Dynamic Calc |
| FCCS_CashFlow_Financing                   | Net Cash from Financing                            | Dynamic Calc |
| FCCS_CashFlow_IssueOfStock                | Cash Flow from Issue Of Stock                      | Dynamic Calc |
| FCCS_CashFlow_ProceedsFromDebt            | Cash Flow from Proceeds from Debt                  | Dynamic Calc |
| FCCS_CashFlow_RepaymentOfDebt             | Cash Flow from Repayment Of Debt                   | Dynamic Calc |
| FCCS_CashFlow_OtherFinancingActivities    | Cash Flow from Other Financing Activities          | Dynamic Calc |
| CashFlow_LeasePymts                       | Cash Flow from Repayment of Finance Lease Capital  | Dynamic Calc |
| CashFlow_LeaseInt                         | Cash Flow from Repayment of Finance Lease Interest | Dynamic Calc |
| FCCS_CashChange                           | Cash Change  | Dynamic Calc |
| FCCS_OpeningBalance_Cash                  | Opening Balance for Cash asset                     | Dynamic Calc |
| FCCS_FX_Total_NonCash                     | Total effect from FX on non-Cash accounts          | Dynamic Calc |
| FCCS_ClosingBalance_Cash                  | Closing Balance for Cash asset                     | Dynamic Calc |

The basic structure for the Cash Flow is provided:

- FCCS\_Operating/Investing, etc.
- But sufficient additional granular movement detail to identify cash and non-cash elements needs to be added



# FCCS Demo





# Comparing FCCS to HFM

|                                   | HFM   | FCCS  | FCCS Future Enhancements  |
|-----------------------------------|---|---|---|
| <b>Infrastructure and Support</b> | <ul style="list-style-type: none"> <li>On-premise or 3rd Party hosted</li> <li>IT and application support needed</li> </ul> | <ul style="list-style-type: none"> <li>No need to pay for hardware or support the infrastructure</li> <li>Application support still required</li> </ul>                         |   |
| <b>Versions</b>                   | <ul style="list-style-type: none"> <li>Manage patching process timings in house</li> </ul>                                  | <ul style="list-style-type: none"> <li>Applied automatically; currently monthly</li> </ul>  |   |
| <b>Scalability</b>                | <ul style="list-style-type: none"> <li>May need to add new hardware</li> <li>Unlimited applications</li> </ul>              | <ul style="list-style-type: none"> <li>Add new user licences</li> <li>One application per instance</li> <li>Limitations on members</li> </ul>                                   |   |
| <b>Rules</b>                      | <ul style="list-style-type: none"> <li>Customisable rules for Calculations, Translations and Consolidations</li> </ul>      | <ul style="list-style-type: none"> <li>Out-of-the-Box rules</li> <li>Limited customisation e.g. member calculations</li> </ul>  | <ul style="list-style-type: none"> <li>Advanced consolidations for e.g. JVs, Equity elim</li> <li>Custom calcs (CalcManager)</li> </ul> |
| <b>Dimensions</b>                 | <ul style="list-style-type: none"> <li>8 standard dimension plus configurable number of Custom dimensions</li> </ul>        | <ul style="list-style-type: none"> <li>Max two Customs (depends on application creation options)</li> <li>Pre-defined Custom dimensions e.g. Multi-GAAP, Data Source</li> </ul> | <ul style="list-style-type: none"> <li>Ability to create additional Custom dimensions</li> </ul>  |
| <b>Metadata Management</b>        | <ul style="list-style-type: none"> <li>HFM client, EPMA, 3rd Party</li> </ul>   | <ul style="list-style-type: none"> <li>Web interface and SmartView</li> </ul>   |   |
| <b>Signage</b>                    | <ul style="list-style-type: none"> <li>Customisable e.g. Income positive, Expense negative</li> </ul>                       | <ul style="list-style-type: none"> <li>Income, Expense, Asset, Liability all positive</li> </ul>  |   |
| <b>Consolidation/Translation</b>  | <ul style="list-style-type: none"> <li>PVA or VAL methods</li> </ul>  | <ul style="list-style-type: none"> <li>PVA method only</li> </ul>   |   |
| <b>Licensing</b>                  | <ul style="list-style-type: none"> <li>FDMEE, SDM, CM separate</li> </ul>   | <ul style="list-style-type: none"> <li>All part of the package</li> </ul>   |   |



# Comparing FCCS to HFM

## Considerations

- New product and still evolving compared to HFM.
- No conversion utility from HFM to FCCS (possible in the future).
- Limited as a reporting solution e.g. not able to embed detailed Tax Reporting, Tax Reporting Cloud Service would need to be purchased.
- FCCS not completely 'Out-of-the-Box'
  - » Still requires significant application design and development effort.
- FCCS is easily scalable (add user licences to scale up).
- FCCS is NOT HFM in the cloud
  - » HFM applications and reporting processes would need to be evaluated and redesigned before moving to FCCS.



# Q & A

- Any Questions?



# Hyperion Focus 17

## Thank you



**ORACLE**

**cubus**

**TPH**

