

# Hyperion Focus 16

## How Mondi administrators use EPM Maestro Suite

Dennis Strasser  
Mondi Group



# How Mondri administrators use EPM Maestro Suite

Hyperion Focus '16

Oct 20<sup>th</sup> 2016



# Overview of Mondri-Group

Hyperion Focus '16



# Mondi at a glance

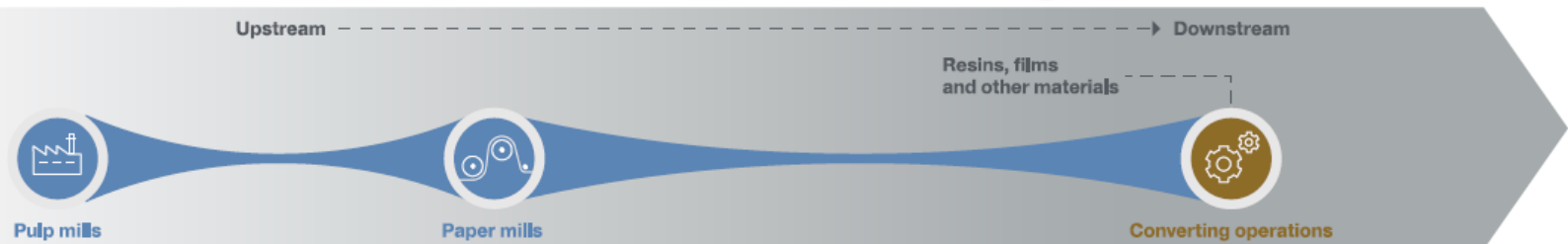


- 25,000 employees
- Over 100 **operations** located in more than 30 countries
- Corporate offices in Johannesburg, London and Vienna
- Primary listing in [Johannesburg](#) and Premium listing in [London](#)

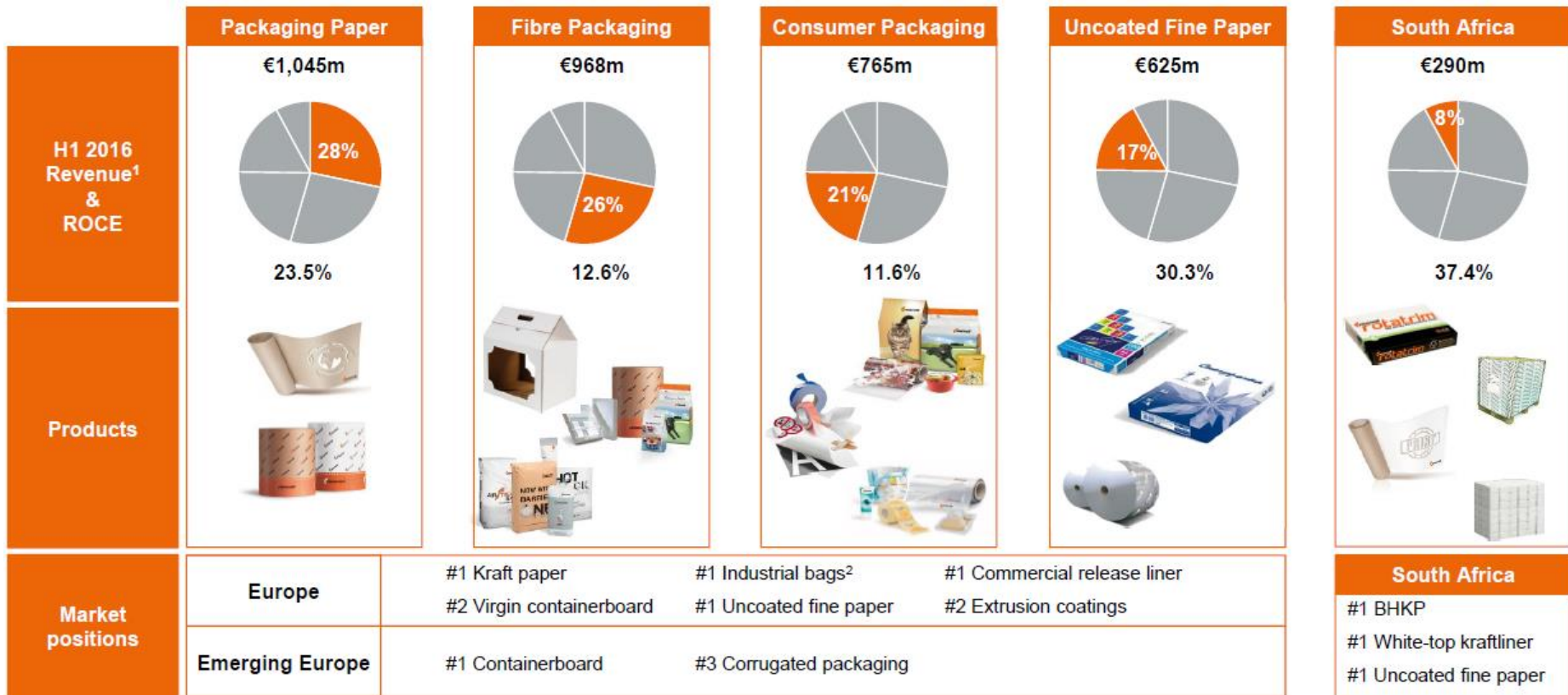
## Locations



## Business Model



# Business Units overview

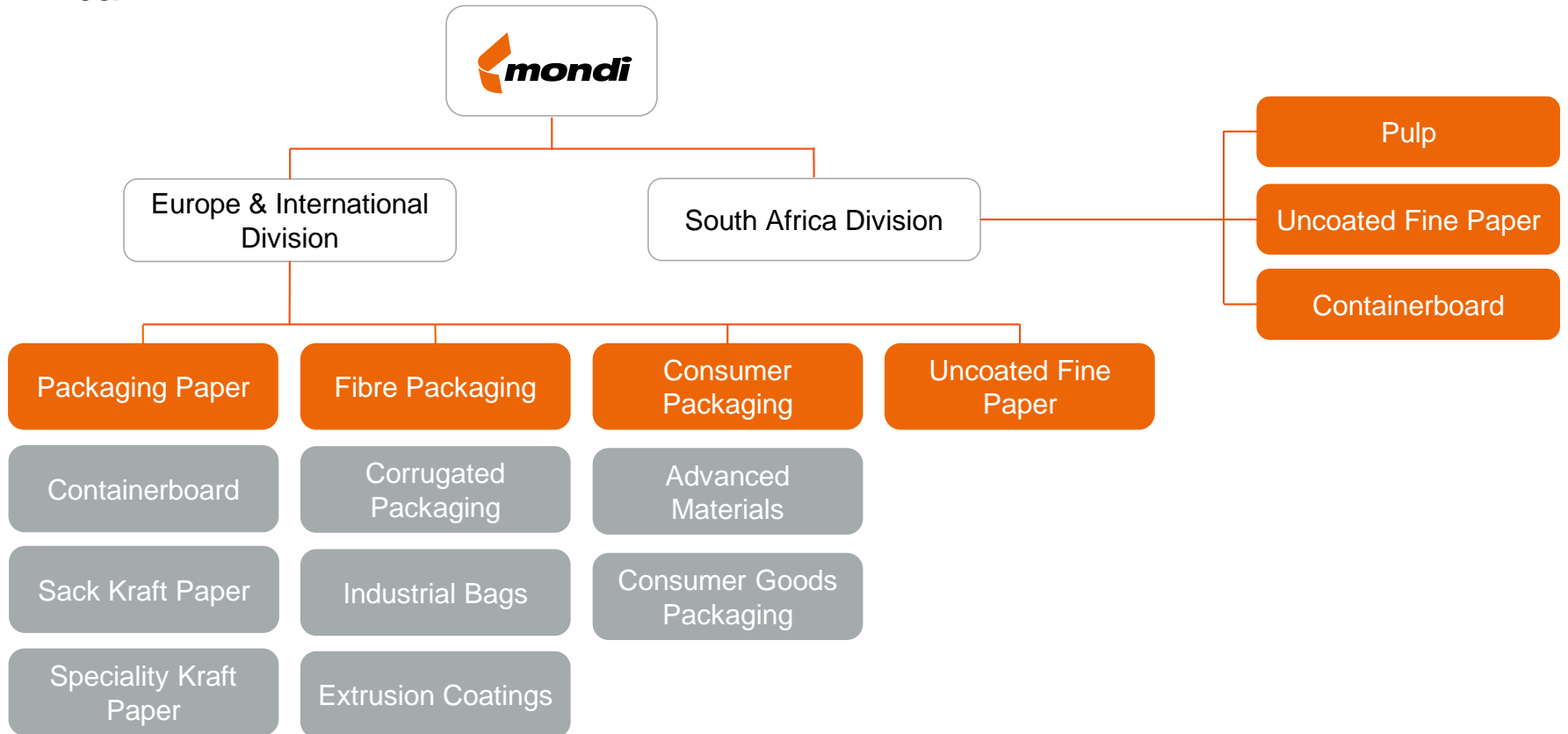


# Mondi Group



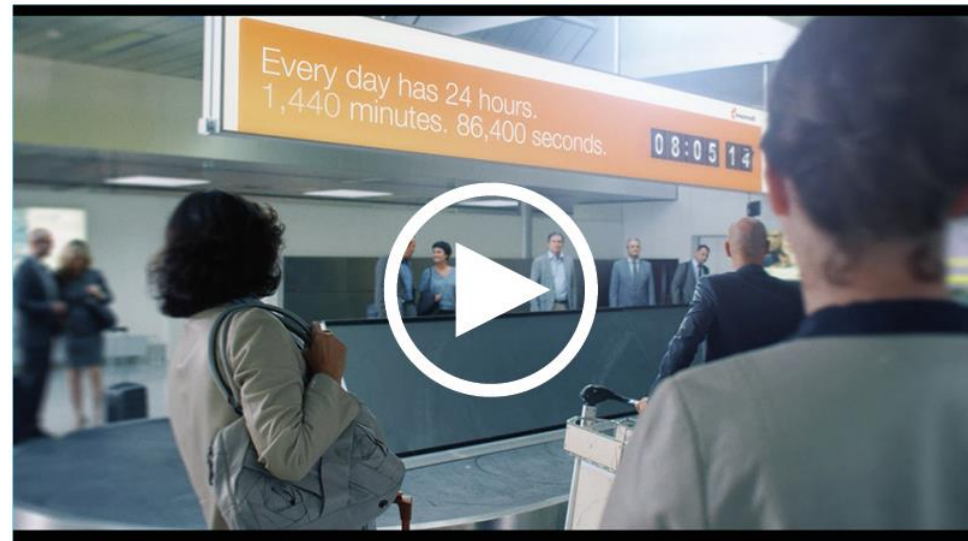
We are an international packaging and paper Group, employing around 25,000 people across more than 30 countries.

Our key operations are located in central Europe, Russia, North America and South Africa.



## IN TOUCH EVERY DAY

Our products touch the lives of millions, every day.





## How Mondri administrators use EPM Maestro Suite

# Cornerstones



## Mondi

- 500 Users
- 1500 Entities legal and non-legal
- 3 Applications
  - Financial Reporting
  - CAPEX Reporting
  - Sustainability Reporting
- Financial Reporting
  - 13 Scenarios
  - Several Outlooks and Budgets

# Cornerstones



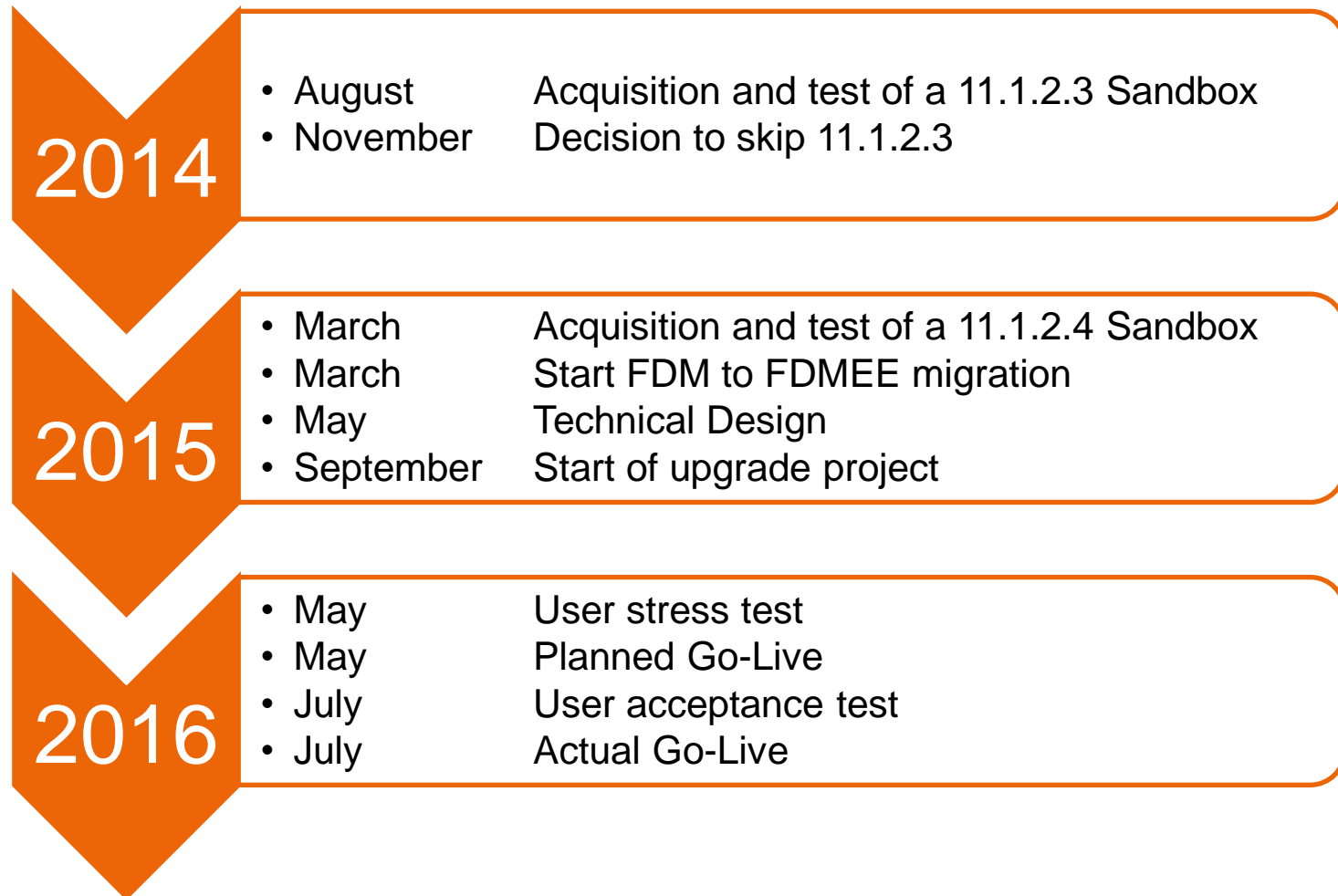
## Project

- involved parties
  - Mondri
  - AMOSCA (application support, data reconciliation, testing)
  - Infratects (Setup and Installation)
  - Keyteach
- Web based and on-site trainings
- 11 months project duration
- Two tests with user involvement
  - User stress test
  - User acceptance test
- Uncountable Patches / Admin tests / automated stress tests

# Preparation-Project Outcomes



## From preparation to project



# Obstacles to overcome

## Finding the right Java Application Server

- EPM Maestro uses the HFM API
- New API is Java based so a Java Application Server is needed
- Initially Oracle developers were happy to let third party plugins run on Weblogic beneath HFM
- Later on not possible due to management decisions within Oracle
- Another Java Application Server was needed.
  - Weblogic      fully compatible, pricey
  - Glassfish      shares a lot of code with Weblogic, not supported by Oracle anymore

# Obstacles to overcome

## Finding the right Java Application Server

- Weblogic
  - + fully compatible
  - pricey
- Glassfish
  - + shares a lot of code with Weblogic
  - not supported by Oracle anymore
- jBoss, Tomcat, WildFly
  - + Free but support can be bought
  - Compatibility unsafe
- Payara
  - + Based on Glassfish → shares a lot of code with Weblogic
  - Support can be bought ad-hoc

# Obstacles to overcome

## Timeline

- We were one of the first clients to update to 11.1.2.4
- Scheduled Go-Live was May 2016
- Final stable release of Maestro came in May
- Testing and re-testing because of a moving target

# Obstacles to overcome

## Moving target

- During the final half-year of the project PSUs and PSEs came monthly
- Every update the whole system had to be re-tested
- With updates also API changed
  - Functionality which was already working stopped working
  - New Functionality

# Bugs to remember



## API socket flooding

- HFM is now using Thrift instead of DCOM for the API leading to a new way of Connection pooling
- Connection/socket pooling had a bug and opened new sockets instead of reusing sockets in the pool
- Same happened when a session in the API was opened longer than 00:16:27
- Opened and closed thousands of sockets and closed them immediately
- Sockets had to be reserved for 4 minutes
- Server ran out of Sockets not resources
- Even console crashed when showing the sockets opening

# Bugs to remember



## Problems with Unicode and Folder/Document names

- Symbols like é è Ç õ ê ñ etc. cause problems when exporting and importing Documents
- Errors loading documents when folder “test” includes a document with label “test”
- Still unsolved
- On the other hand: HFM 11.1.2.4 saves log-entries in the users display language (we have Chinese logs...)

# Meet Maestro



## Monthly routine

The screenshot displays the EPM Maestro software interface. The title bar shows the window name "20160930\_FIN201607\_monthly - EPM Maestro". The ribbon menu includes "Home", "Other tasks", "Execute", "Point-of-view", and "Manage". The ribbon is divided into four sections: "Data" (Extract, Load, Copy, Clear, Value), "Journals" (Process, Copy, Periods, Templates), "Calculations" (Consolidate, Translate, Allocate, Equity, Calculate), and "Process control" (Promote, Reject, Unlock, Lock). Below the ribbon, a task bar shows several tabs: "Main", "Outlook1", "Outlook2", "Outlook3", "HistAct", "Flash", "Estimate", "FirstInfo", "PromoteActual", and "PromoteOutlook3". The main workspace displays a log of execution steps:

```
Consolidate All With Data Jan 2007 to @MonthlyReporting @MonthlyReporting. Entities: ALLEntities. Scenarios: Actual
Execute Thread: PromoteActual
Execute Thread: Flash
Execute Thread: Estimate
Execute Thread: FirstInfo
Wait (thread: Flash)
Wait (thread: Estimate)
Wait (thread: FirstInfo)
Execute Thread: Outlook1
Execute Thread: Outlook2
Execute Thread: Outlook3
Execute Thread: HistAct
Wait (thread: Outlook1)
Wait (thread: Outlook2)
Wait (thread: Outlook3)
Wait (thread: HistAct)
Send Email to dennis.strasser@mondigroup.com
```

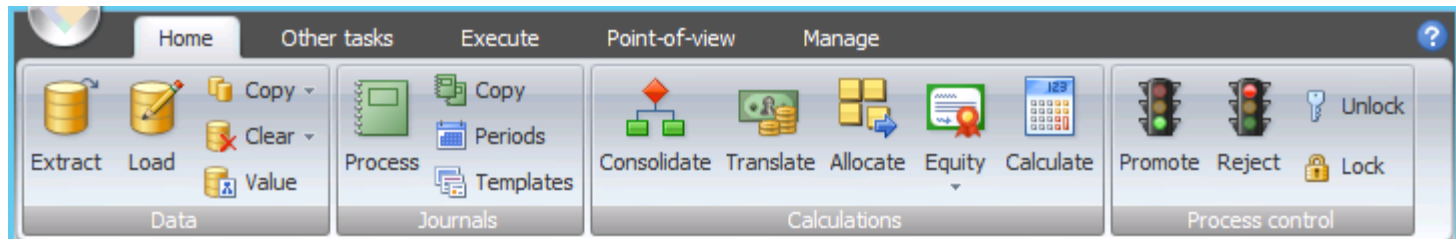
At the bottom of the window, the status bar shows "FINNEW on MIRAS4DEV / DEV" on the left and "Licensed to Mond" on the right.

# Meet Maestro



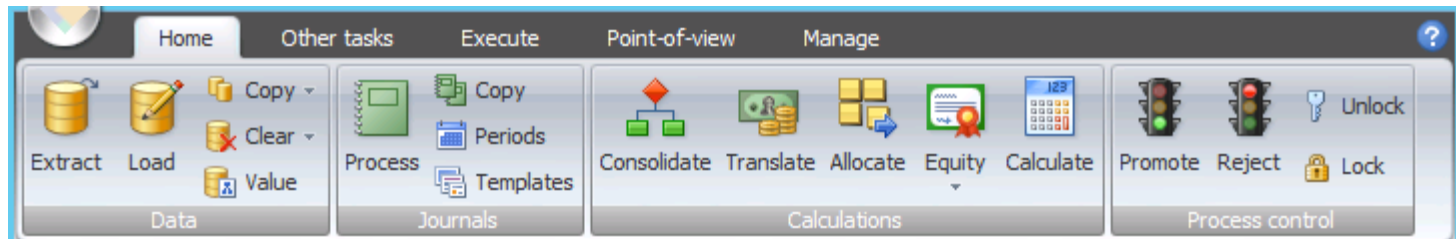
- A structured approach to automate HFM
- Parallel and serial approaches possible
- It's a great helper
  - to automate continuous work and
  - to perform tasks which are tedious in a default HFM setup

# Data Copies



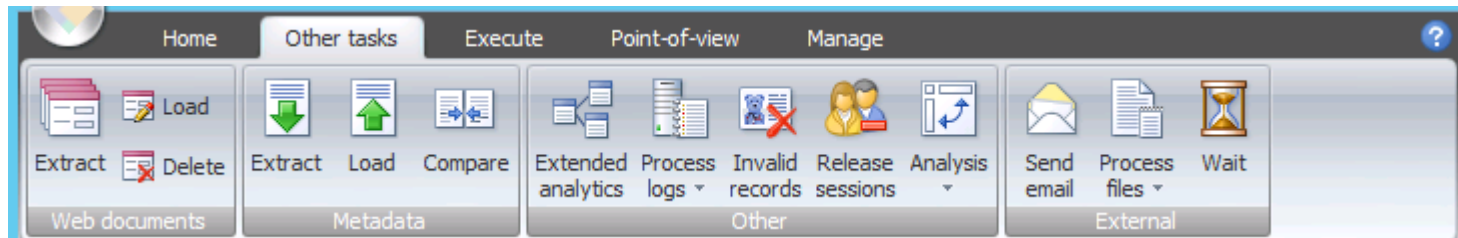
- Use of filtered data copies
- Monthly data load to FDMEE testing app
- Copy of Actual Data to Outlooks
- Copy with factor to populate zeros

# Continuous automation



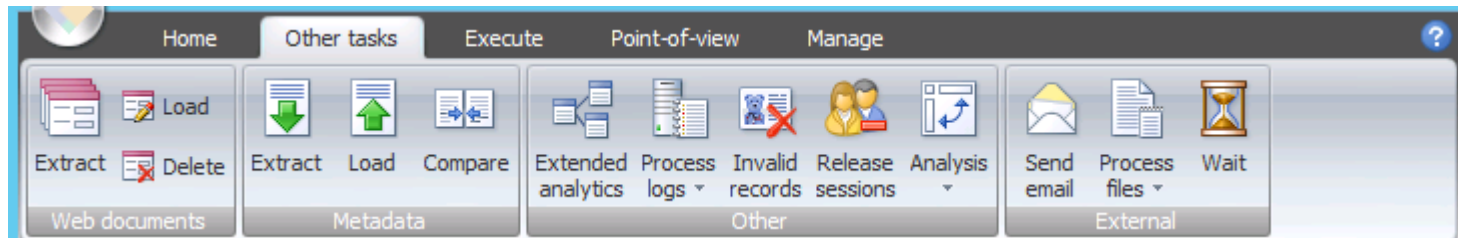
- schedule Consolidations
  - Scheduled with windows scheduler
  - We consolidate current year over night for all currently active Scenarios
- Monthly housekeeping
  - Scheduled consolidations followed by process management
  - Parallel to process management already consolidation of dependent scenarios
  - Locking/unlocking still problematic because of bad performance in HFM
  - Transfer of changed Web forms from DEV to PROD
  - Use of time-driven Variables
  - Inform on success or error via mail

# Backup and load of Web Documents



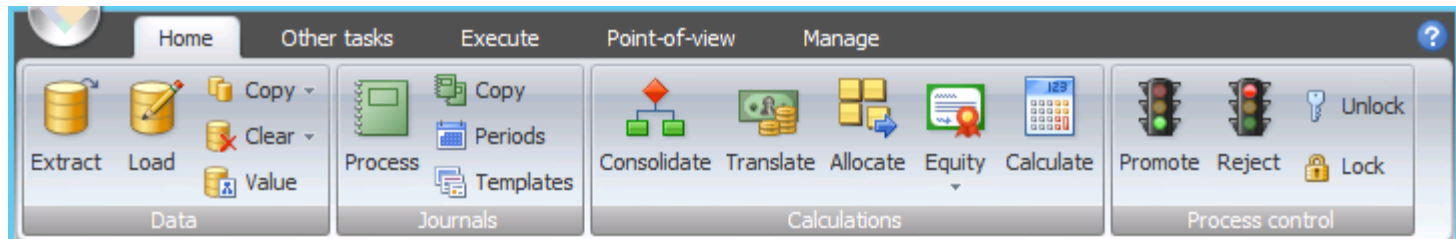
- On demand extract and backup of Web documents
- Easier to search with Windows Explorer for “missing” or “stolen” data grids and tasklists
- Filtered load of web documents by type with possibility to overwrite (or not)

# Backup of logs



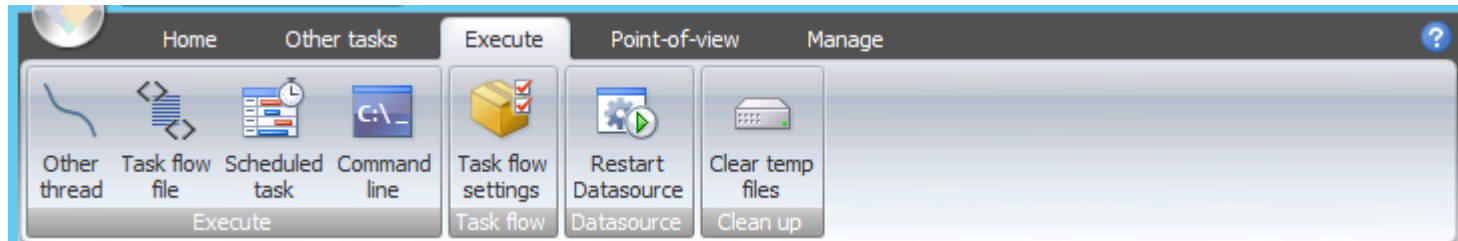
- Scheduled (e.g. hourly) extracts of logs to a secure share
- Only write-accessible by schedule user
- Audit save
- Structures extracts
- Clear logs afterwards – avoid instabilities in HFM because of too many log entries

# Process management



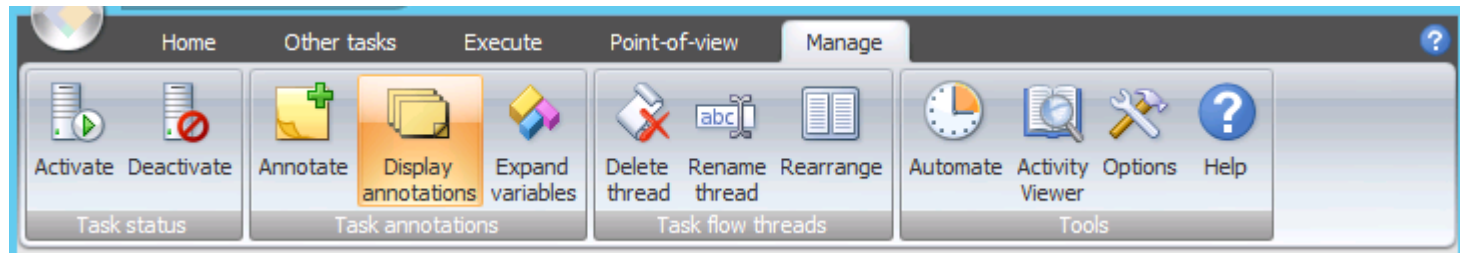
- **Reject**
  - Possible to reject Base-Entities  
(Goes through the tree and automatically rejects the parents needed)
  - Can reject over several periods
  - Can reject over several phases
  - Can reject to levels which the data was never promoted to
- **Promote**
  - Automatically promote whole tree for several phases and period
  - Promote through several levels, to make sure that reject falls to the right level

# Threads



- We are intensively using threading in HFM
- While one Scenario runs through process management other Scenarios get consolidated
- Consolidate Scenarios in the right order (e.g. Outlooks which get impacted by Actuals)

# Manage Maestro Routines



- Set up predefined Routines and deactivate the tasks you do not need
- Reactivate them when you need them
- See current value of Variables
- Schedule your routine directly from Maestro

### **Forward-looking statements disclaimer**

This document includes forward-looking statements. All statements other than statements of historical facts included herein, including, without limitation, those regarding Mondi's financial position, business strategy, market growth and developments, expectations of growth and profitability and plans and objectives of management for future operations, are forward-looking statements. Forward-looking statements are sometimes identified by the use of forward-looking terminology such as 'believe', 'expects', 'may', 'will', 'could', 'should', 'shall', 'risk', 'intends', 'estimates', 'aims', 'plans', 'predicts', 'continues', 'assumes', 'positioned' or 'anticipates' or the negative thereof, other variations thereon or comparable terminology. Such forward-looking statements involve known and unknown risks, uncertainties and other factors which may cause the actual results, performance or achievements of Mondi, or industry results, to be materially different from any future results, performance or achievements expressed or implied by such forward-looking statements. Such forward-looking statements and other statements contained in this document regarding matters that are not historical facts involve predictions and are based on numerous assumptions regarding Mondi's present and future business strategies and the environment in which Mondi will operate in the future. These forward-looking statements speak only as of the date on which they are made.

No assurance can be given that such future results will be achieved; various factors could cause actual future results, performance or events to differ materially from those described in these statements. Such factors include in particular but without any limitation: (1) operating factors, such as continued success of manufacturing activities and the achievement of efficiencies therein, continued success of product development plans and targets, changes in the degree of protection created by Mondi's patents and other intellectual property rights and the availability of capital on acceptable terms; (2) industry conditions, such as strength of product demand, intensity of competition, prevailing and future global market prices for Mondi's products and raw materials and the pricing pressures thereto, financial condition of the customers, suppliers and the competitors of Mondi and potential introduction of competing products and technologies by competitors; and (3) general economic conditions, such as rates of economic growth in Mondi's principal geographical markets or fluctuations of exchange rates and interest rates.

### **Mondi expressly disclaims**

- a) any warranty or liability as to accuracy or completeness of the information provided herein; and
- b) any obligation or undertaking to review or confirm analysts' expectations or estimates or to update any forward-looking statements to reflect any change in Mondi's expectations or any events that occur or circumstances that arise after the date of making any forward-looking statements, unless required to do so by applicable law or any regulatory body applicable to Mondi, including the JSE Limited and the LSE.

# Hyperion Focus 16

# Thank you



FDMEetoolbox

